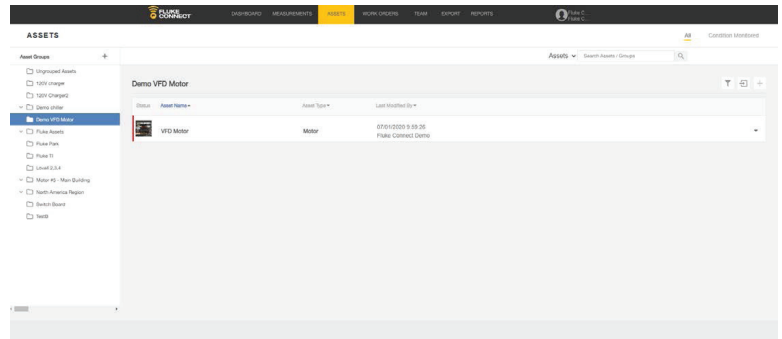


# Fluke Connect Web App How-To:

## Step-by-step Guide to Setting an Alarm on an Asset

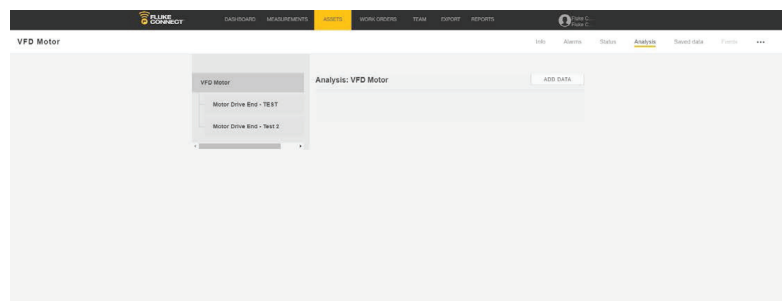
### Step 1:

Select the asset from your Assets List.  
Single left click on the specific asset.



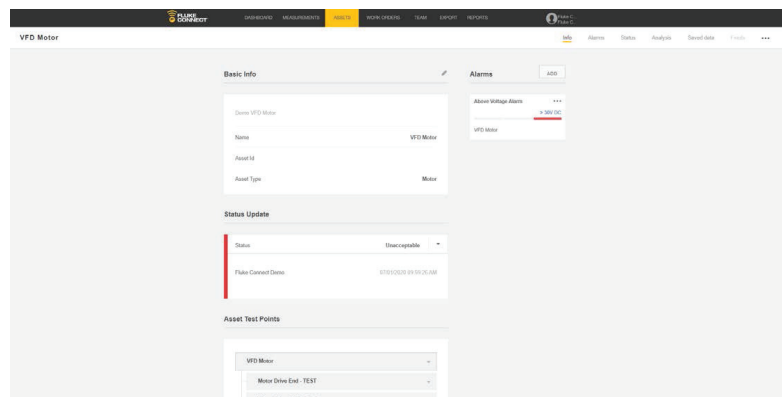
### Step 2:

Single left click on the 'Info' tab in the gray bar.



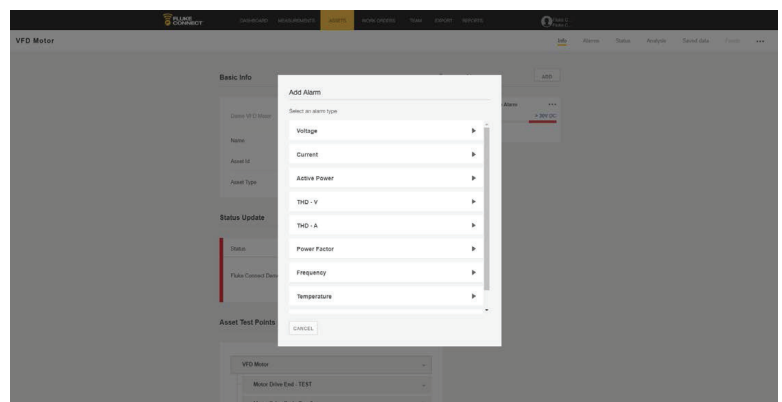
### Step 3:

Single left click on the 'Add' button next to the 'Alarms' header.



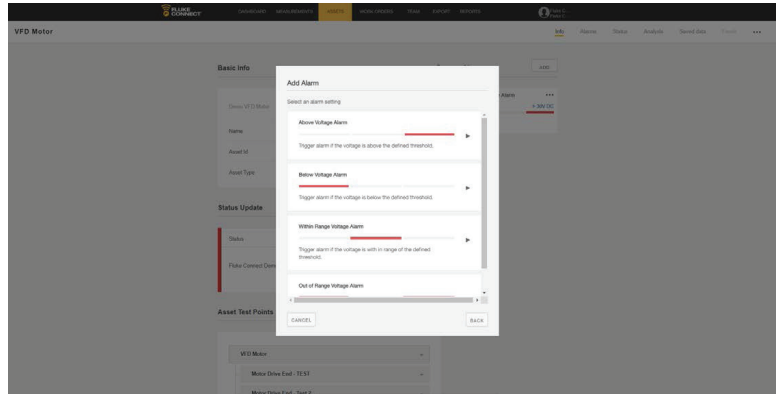
### Step 4:

Select the type of measurement you would like to add an alarm to.



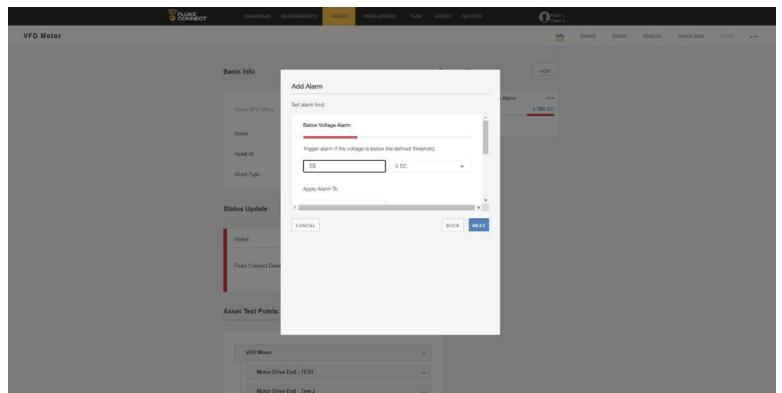
**Step 5:**

Select the limit (above, below, within range, out of range) of the measurement.



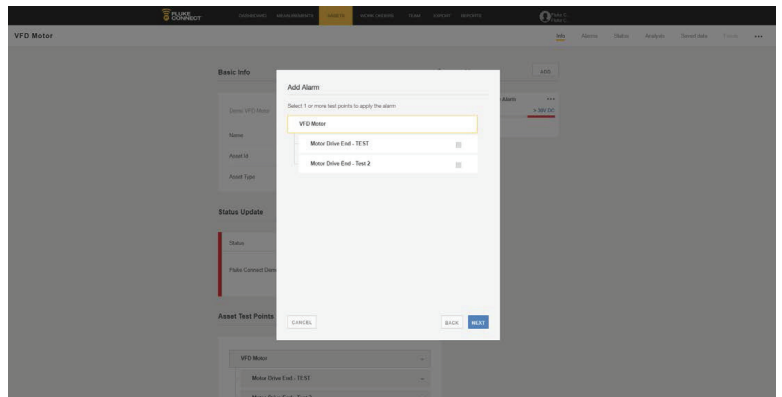
**Step 6:**

Add in the measurement that will serve as the alarm. Then click on the 'Next' button.



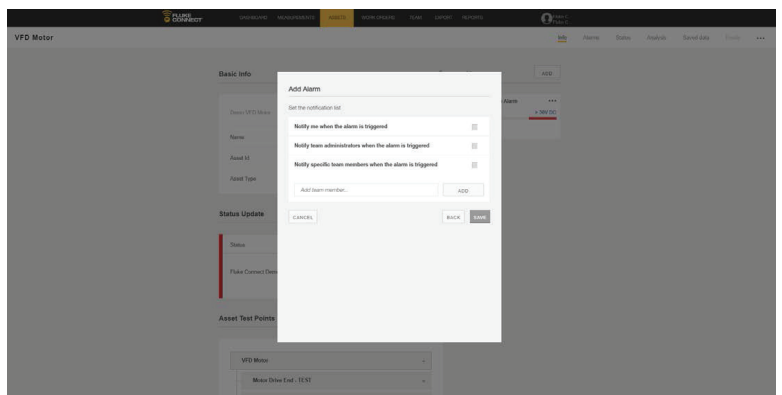
**Step 7:**

Select where on the asset you want the alarm measurement to be assigned to. Then click on the 'Next' button.



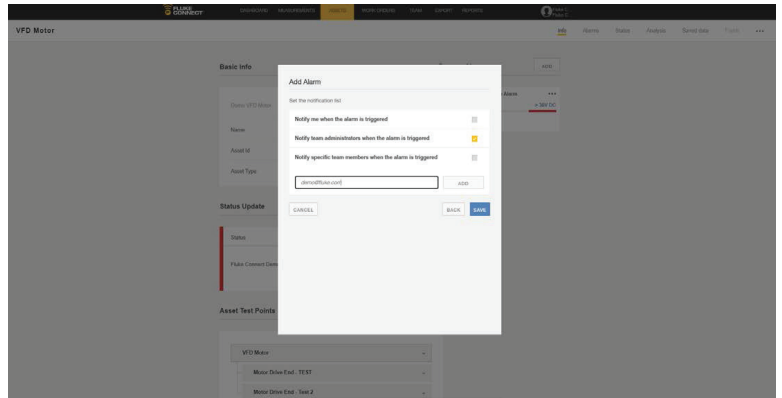
**Step 8:**

Alarms can be sent to your team members. Select who you would like the alarm notification to be sent to.



**Step 9:**

Single right click on the 'Save' button.



**Accelix.** *Connected Reliability.*

**Fluke Corporation**  
PO Box 9090, Everett, WA 98206 U.S.A.

**For more information call:**

In the U.S.A. 856-810-2700

In Europe +353 507 9741

In UK +44 117 205 0408

Email: support@accelix.com

Web access: <http://www.accelix.com>

©2020 Fluke Corporation. 07/2020 6013631a-en

**Modification of this document is not permitted without written permission from Fluke Corporation.**